

LASER™

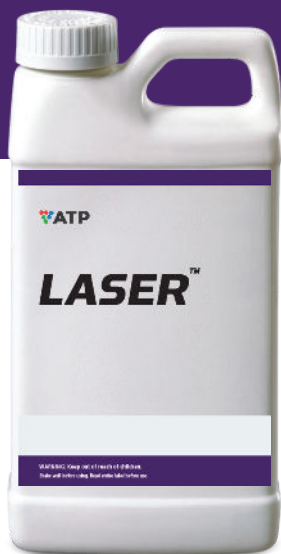
Nutrition

Biostimulant

 **Timing:**
Foliar

 **Nutrient Type:**
Macronutrients

 **Formulation:**
Liquid



Simplify your Nutrition - add Laser with your pesticide.

The Laser™ line does more than a traditional single element foliar product. Laser products provide a combination of the essential elements (NPK) required by the plant with a target nutrient, per formulation, to overcome a crop's specific deficiency.

- Four products, each one individually formulated to target a specific nutrient while balancing overall plant nutrition
- Laser can be used on all crops and at all stages throughout the growing season
- 100% plant available with the lowest salt index
- Includes an amino acid to increase nutrient uptake and maximize nutrient use efficiency by the plant
- Compatible with most ATP products and agri-chemicals*

NPKS = Delivers Genetic Potential

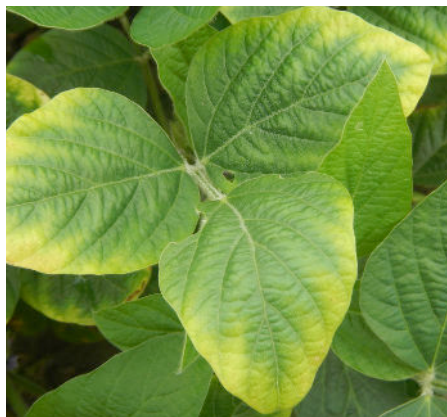
The Laser line includes Laser P, Laser KS, Laser KB, and Laser CaB - each individually formulated to target specific nutrients to support plants that are strong and healthy. Key benefits of these nutrients include:

- **Nitrogen** enhances nutrient uptake and promotes rapid growth in the plant.
- **Phosphorus** functions as one of the main promoters of photosynthesis, nutrient transport, and energy transfer via energy-rich linkages (ATP).
- **Potassium** is involved in the formation and translocation of sugars, proteins, starch, and plant growth hormones.
- **Sulfur** improves root growth and seed production as well as resistance to cold.
- **Calcium** promotes cell wall structure, stimulates root and leaf development and promotes the uptake and transport of other nutrients.
- **Boron** is essential for plant growth and cell development, contributing to stalk stability and function of the cell wall membranes, and seed and fruit development.

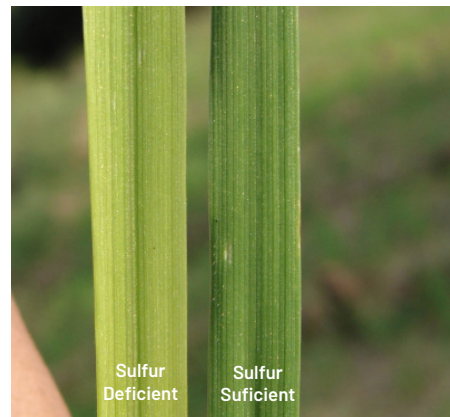
Nitrogen in Wheat



Potassium in Soybeans



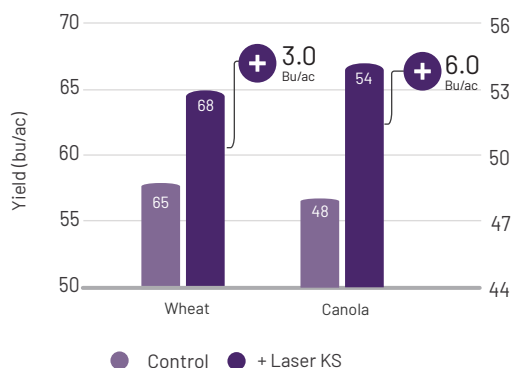
Sulfur in Wheat



Proven Agronomic Performance

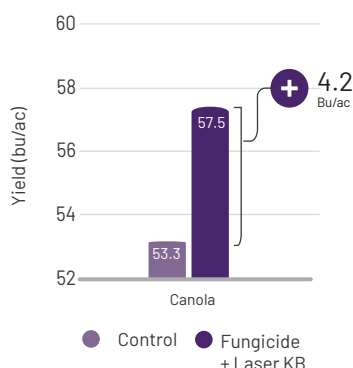
- Data generated in North America shows that Laser KS increased overall wheat and canola yield by an average 3.0 and 6.0 bu/ac, respectively. Sufficient potassium and sulfur had a direct positive effect on the crop's yield due to stronger cell walls, enhanced synthesis of amino acids and proteins, and vigorous plant growth.
- 2020 grower replicated trials showed a synergistic effect of foliar applied K+B at flowering. Laser KB increased canola yield by 4.2 bu/ac versus the check.
- Summary data collected from 2 replicated trials in 2011 have demonstrated the benefits of supplemental phosphorus nutrition. The addition of Laser P enhanced productivity by an average of 4 bu/ac in Wheat.
- To review the complete Laser data package, please contact your ATP Technical expert today.

K+S Response (Wheat and Canola)



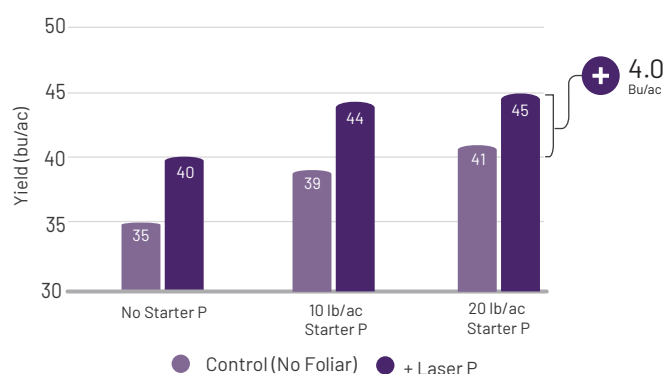
Summary of North American Grower Trials, (2013)
Wheat: Laser KS applied at 2 qt/ac at BBCH 14
Canola: Laser KS applied at 2 qt/ac at BBCH 30

K+B Response (Canola)

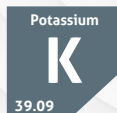


Summary of 6 replicated trials
Laser KB applied at 1 qt/ac at 10% flowering on canola

P Response (Wheat)



Summary of 2 small plot replicated trials (2011)
P deficient soils (5 ppm - Bicarb)
Laser P applied at 3 qt/ac at BBCH 14



**Sufficient potassium is vital as it regulates many essential processes:
Enzyme activation, photosynthesis, water use efficiency, starch formation, and protein synthesis.**

Product Recommendations

- Laser products are typically applied at 1-3 qt/ac at herbicide timing (BBCH 13-31), but can be applied later if needed, such as at flowering or post-flowering.
- Laser products are tank-mixable with most pesticides but a jar test is always recommended to confirm product compatibility. For support, please refer to the product compatibility information at www.atpag.com.
- To view the Laser Line's MSDSs and Product Labels please visit www.atpnutritionag.com
- **Tissue test is required to determine the optimum application rate.

| Product | Analysis | Rate (L/ac)** | Timing | Form |
|---------|---|---------------|--------|--------|
| P | 6-26-5-0.1Zn-0.1Fe-0.05Cu-0.05Mn-0.05B + BA | 1.0-3.0 | Foliar | Liquid |
| KS | 10-5-15-6S-0.1Zn-0.1Fe-0.05Cu-0.05Mn-0.05B + BA | 1.0-3.0 | Foliar | Liquid |
| KB | 2-0-15-1.5B + Cellburst™ | 1.0-3.0 | Foliar | Liquid |
| CaB* | 8-0-0-10Ca-2B-0.6Mg-0.3Zn-0.1Mn-0.1Fe-0.05Cu + BA | 1.0 | Foliar | Liquid |

*Made to order and available upon request. For inquiries, please contact the ATP order desk.
BA = Bio-Activators



At ATP, we believe a proactive, science-based approach to restore the balance between plant and soil health is the single most effective way to deliver the genetic potential of the crop. We challenge the status quo by utilizing agtech to monitor and drive productivity.

info@atpag.com | 1.877.538.5511 | www.atpag.com