



Nutrition

Biostimulant



Timing:  
Foliar



Nutrient Type:  
Macronutrients,  
Micronutrients



Formulation:  
Liquid



## Simplify your Nutrition - add NRG with your pesticide.

The NRG™ line does more than a traditional single element foliar product. NRG products provide a combination of the essential elements (NPK) required by the plant with a target nutrient, per formulation, to overcome a crop's specific deficiency.

- Seven products, each one individually formulated to target a specific nutrient while balancing overall plant nutrition
- NRG can be used on all crops and at all stages throughout the growing season
- 100% plant available with the lowest salt index
- Includes an amino acid to increase nutrient uptake and maximize nutrient use efficiency by the plant
- Compatible with most ATP products and agri-chemicals\*

## NPKS = Delivers Genetic Potential

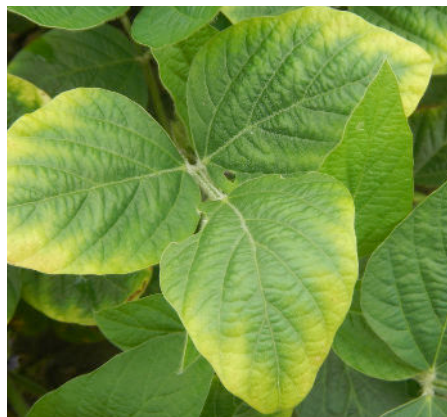
The NRG line includes NRG, N, NRG P, NRG KS, NRG KB, NRG Mg, NRG CaB, and NRG Mn - each individually formulated to target specific nutrients to support plants that are strong and healthy. Key benefits of these nutrients include:

- **Nitrogen** enhances nutrient uptake and promotes rapid growth in the plant.
- **Phosphorus** functions as one of the main promoters of photosynthesis, nutrient transport, and energy transfer via energy-rich linkages (ATP).
- **Potassium** is involved in the formation and translocation of sugars, proteins, starch, and plant growth hormones.
- **Sulfur** improves root growth and seed production as well as resistance to cold.
- **Calcium** promotes cell wall structure, stimulates root and leaf development and promotes the uptake and transport of other nutrients.
- **Boron** is essential for plant growth and cell development, contributing to stalk stability and function of the cell wall membranes, and seed and fruit development.

### Nitrogen Deficiency in Wheat



### Potassium Deficiency in Soybeans



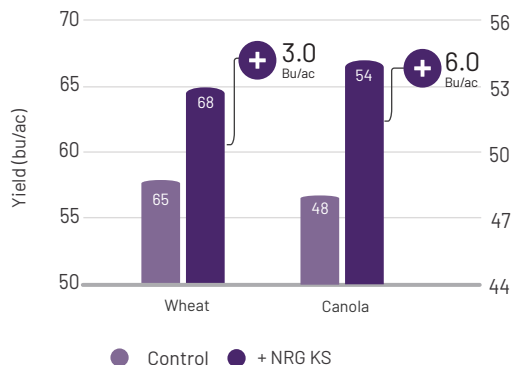
### Sulfur Deficiency in Wheat



## Proven Agronomic Performance

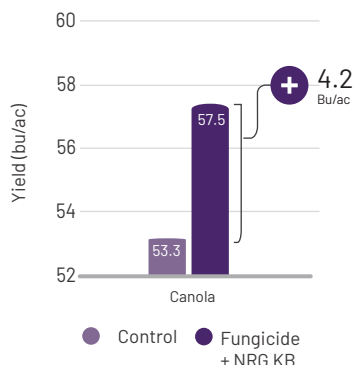
- Data generated in North America shows that NRG KS increased overall wheat and canola yield by an average 3.0 and 6.0 bu/ac, respectively. Sufficient potassium and sulfur had a direct positive effect on the crop's yield due to stronger cell walls, enhanced synthesis of amino acids and proteins, and vigorous plant growth.
- 2020 grower replicated trials showed a synergistic effect of foliar applied K+B at flowering. NRG KB increased canola yield by 4.2 bu/ac versus the check.
- Summary data collected from 2 replicated trials in 2011 have demonstrated the benefits of supplemental phosphorus nutrition. The addition of NRG P enhanced productivity by an average of 4 bu/ac in Wheat.
- To review the complete NRG data package, please contact your ATP Technical expert today.

### K+S Response (Wheat and Canola)



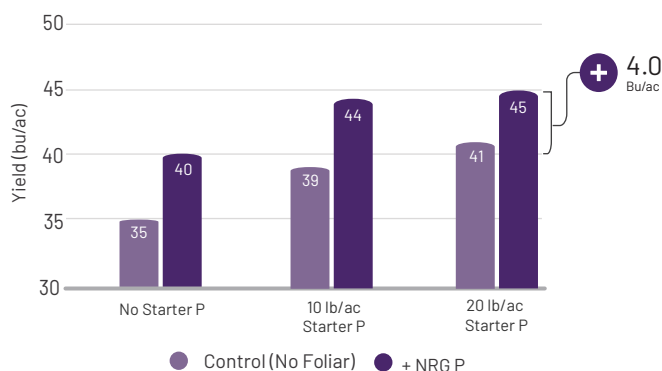
Summary of North American Grower Trials, (2013)  
Wheat: NRG KS applied at 2 qt/ac at BBCH 14  
Canola: NRG KS applied at 2 qt/ac at BBCH 30

### K+B Response (Canola)

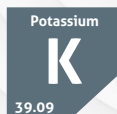


Summary of 6 replicated trials  
NRG KB applied at 1 L/ac at 10% flowering on canola

### P Response (Wheat)



Summary of 2 small plot replicated trials (2011)  
P deficient soils (5 ppm - Bicarb)  
NRG P applied at 3 L/ac at BBCH 14



**Sufficient potassium is vital as it regulates many essential processes: Enzyme activation, photosynthesis, water use efficiency, starch formation, and protein synthesis.**

## Product Recommendations

- NRG products are typically applied at 1-3 L/ac at herbicide timing (BBCH 13-31), but can also be applied later, such as at flowering or post-flowering.
- \*\*Tissue test is required to determine the optimum application rate.
- NRG products are tank-mixable with most pesticides but a jar test is always recommended to confirm product compatibility. For support, please refer to the product compatibility information at [www.atpag.com](http://www.atpag.com)
- To view the SDS's and Product Labels please visit [www.atpag.com](http://www.atpag.com)

Product	Analysis	Rate (L/ac)**	Timing
N	13-10-5 + MicroPak + BA	1.0-3.0	Foliar
P	6-26-5 + MicroPak + BA	1.0-3.0	Foliar
KS	10-5-15-6.0S + MicroPak + BA	1.0-3.0	Foliar
KB	2-0-15-1.5B + Cellburst™	1.0-3.0	Foliar
CaB*	7-0-0-10.0Ca-2.0B + MicroPak	1.0	Foliar
Mg*	0-29-5-4.0Mg	1.0-2.0	Foliar
Mn*	12-8-4-3.4S-5.0Mn	1.0-2.0	Foliar

\*Made to order and available upon request. For inquiries, please contact the ATP order desk.  
BA = Biological-Activators  
MicroPak = Micronutrients



At ATP, we believe a proactive, science-based approach to restore the balance between plant and soil health is the single most effective way to deliver the genetic potential of the crop. We challenge the status quo by utilizing agtech to monitor and drive productivity.

[info@atpag.com](mailto:info@atpag.com) | 1.877.538.5511 | [www.atpag.com](http://www.atpag.com)

Learn More

