

# CONVEY™ RxZn

Nutrition

Biostimulant



Timing:  
Soil



Nutrient Type:  
Micronutrients



Formulation:  
Liquid



## An essential addition to your starter phosphorus program

Convey RxZn is formulated with 3 critical products to maximize both phosphorus and zinc uptake by keeping nutrients available for an extended period of time; resulting in improved early season rooting. This improved nutrient use efficiency drives the genetic potential of your crop. Convey RxZn is designed for all crops as a soil application.

Convey Rx Zn provides these benefits to the crop through the synergy of 3 key technologies:

1. Convey Technology – Novel biostimulant (DOM) to drive early season rooting
2. Blocker Technology (Rx) – Patented complexing chemistry to keep nutrients in soil solution
3. Micro-Che Zn – Soil applied EDTA providing 2 lb of plant available zinc to the crop

### 1 CONVEY™

Convey is a novel biostimulant technology that works in the plant to drive respiration. Increased respiration helps to:

- Drive rooting.
- Superior uptake of applied nutrients.
- Improved nutrient use efficiency.
- Alleviate stress.
- Increases yield and backed by over 1100 independent replicated trials.

+

### 2 BLOCKER (Rx)

Blocker maximizes the nutrient use efficiency of soil applied phosphorus and other essential nutrients. The key is the patented chemistry that complexes nutrients to keep them available in the soil for a longer period of time.

- Strong complexer ensures nutrients stay in soil solution.
- Seedling safe technology.
- Complementary and compatible with Mico-Che, UAN, 10-34-0 and ATS.

+

### 3 MICRO-CHE™ Zn

The Role of Zinc in the Plant

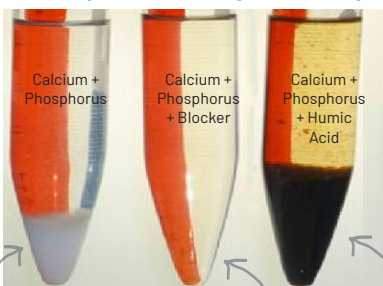
- Aids plant growth hormones and enzyme systems.
- Helps in seed formation.
- Necessary for protein synthesis and membrane function.
- Influences plant hormone production, in particular auxin development, especially IAA.
- Active in chlorophyll synthesis & manufacturing of carbohydrates.
- Zinc causes healthy root growth, leading to enhanced grain yield.

#### Convey in Corn as a Starter



Check (left) vs. Convey treated Corn (right)

#### Blocker impacts Ca Phosphate Tie Up



INSOLUBLE CALCIUM  
PHOSPHATE FORMED

NO PRECIPITATION

INSOLUBLE CALCIUM  
PHOSPHATE FORMED

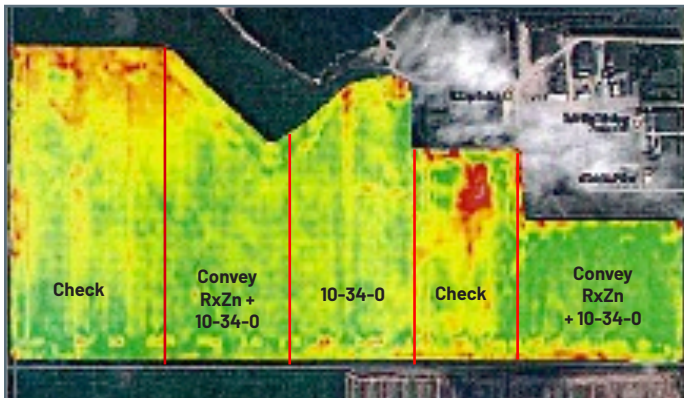
#### Zn Deficiency In Corn



## Proven Agronomic Performance

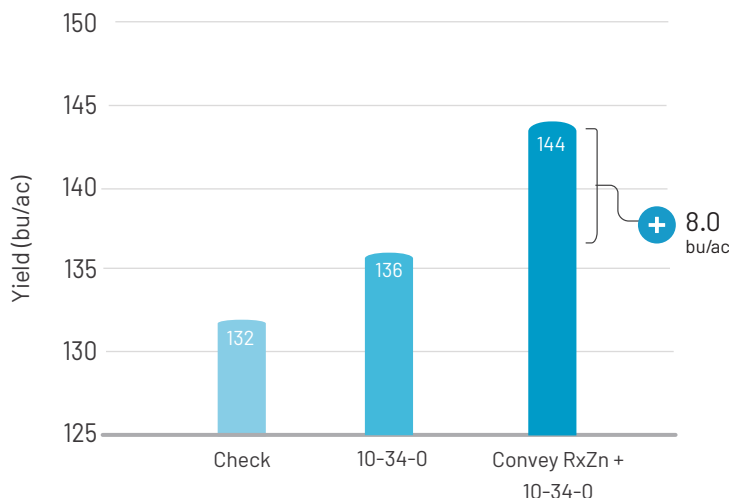
A replicated field scale corn trial (over 260 acres) showed both the value of a starter fertilizer (10-34-0) and most importantly the complementary effect of Convey RxZn with 10-34-0. 10-34-0 increased corn yield by 4 bu/ac while the addition of Convey RxZn added an incremental yield jump of 8 bu/ac.

### Convey RxZn Corn Trial Field Design



2018 Corn Trial Southern, MB.

### Impact of Convey RxZn on Corn Yield



For both treatments, 10-34-0 was applied in furrow at 10 gal/ac.  
Convey RxZn was applied at 2 qt/ac in combination with 10-34-0.



**The addition of Convey RxZn increased yield on corn by 8.0 bu/acre compared to an application of 10-34-0 applied alone.**

## Product Recommendations

- Apply Convey RxZn at 2 qt/ac with a liquid in-furrow or starter fertilizer.
- 2 qt/ac will supply 2 lb Zn/ac, plus the recommended soil rate for Convey and Blocker (Rx).
- If applying alone, be sure to dilute with water to obtain uniform coverage.
- Conduct a jar test if combining with other nutrients outside of 10-34-0, UAN, ATS or Micro-Che.
- To view the Convey Rx Zn SDS and Product Label, as well as to read more information on product compatibility please visit [www.atpag.com](http://www.atpag.com).

Product	Analysis	Rate	Timing	Form
Convey RxZn	5.0 Zn EDTA + CPPA + Blocker (Rx)	2.0 qt/ac	Soil	Liquid



At ATP, we believe a proactive, science-based approach to restore the balance between plant and soil health is the single most effective way to deliver the genetic potential of the crop. We challenge the status quo by utilizing agtech to monitor and drive productivity.

[info@atpag.com](mailto:info@atpag.com) | 1.877.538.5511 | [www.atpag.com](http://www.atpag.com)