

# CONVEY<sup>®</sup> PrimeX

Biostimulant

Nutrition



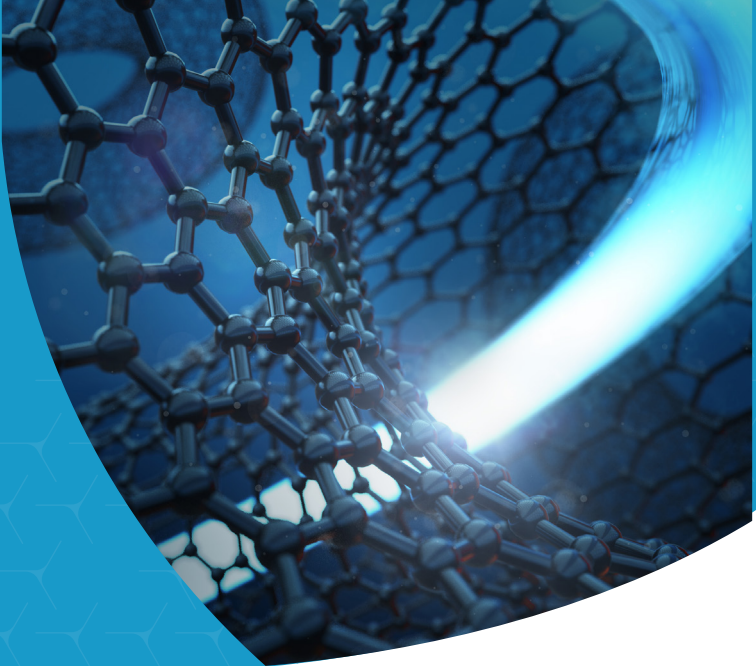
Timing:  
Seed



Nutrient Type:  
Micronutrients



Formulation:  
Powder



## Introducing Convey PrimeX A Novel Plant Establishment Technology

An integrated product that advances flowability, nutrition and plant resilience.

- Drives rapid emergence
- Increases early root development
- Improves shoot growth
- Enhances plantability
- Improves uniformity of stand establishment
- Mitigates abiotic stress
- Easy to apply: Can be applied directly to seeds in planter boxes, seed boxes or seed tenders, ensuring thorough seed coverage.

Convey PrimeX goes beyond a basic seed-flow aid, to become a novel plant establishment technology. It is new class of plant establishment technology for planter-box delivery, integrating three functional components in a single, easy-to-apply dry formulation:

- 1 Convey Biostimulant:** Activates respiratory pathways that accelerate early-season energy production in the plant - driving rooting, nutrient uptake, nutrient use efficiency, antioxidant plant defenses and stress alleviation.
- 2 Targeted Micronutrients:** A balanced blend of Zinc, Iron, Manganese, Boron and Molybdenum designed to support seed metabolic function and early-stage vigor.
- 3 Fluency Agent:** Functionalized graphite improves seed flow to reduce skips, bridging, and downtime while also enhancing nutrient adherence and availability on the seed.



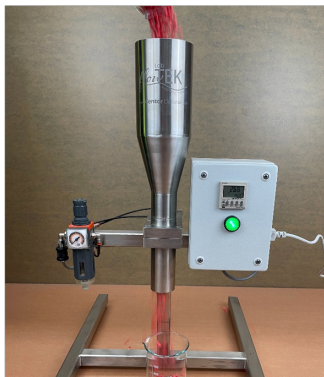
Nutrition



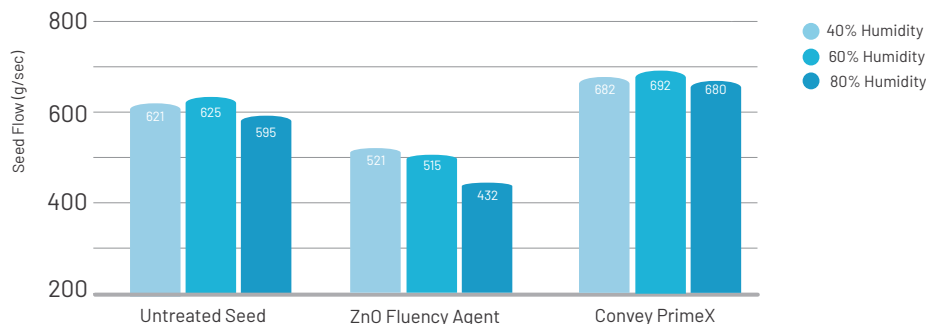
Fluency Agent

## Improved Seed Flow

Convey PrimeX improved corn seed flow rate compared to both untreated seed and conventional micronutrient planter box formulations. In addition, Convey PrimeX was the only treatment where varying the humidity did not negatively impact seed flow.



Flow Rates for Different Plant Box Actives



# Proven Agronomic Performance

## Enhanced Corn Silage Productivity

In corn variety strip trials, Convey PrimeX enhanced seedling establishment, vigor, improved ear development (Figure 1) and maturity, which resulted in a consistent improvement in silage yield. The average increase in silage yield was 25%.

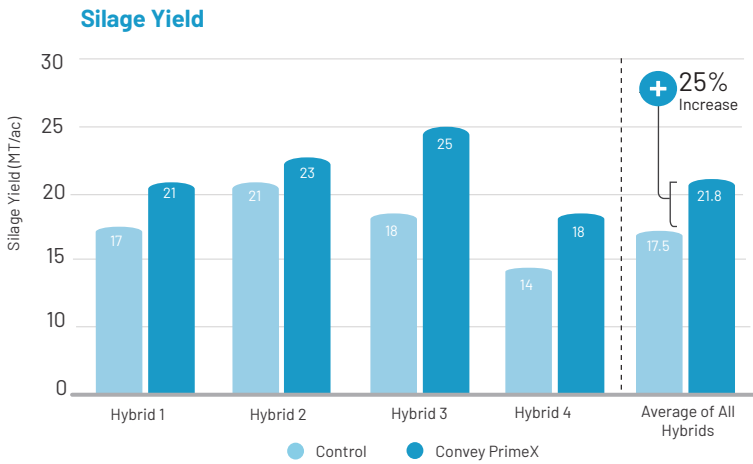
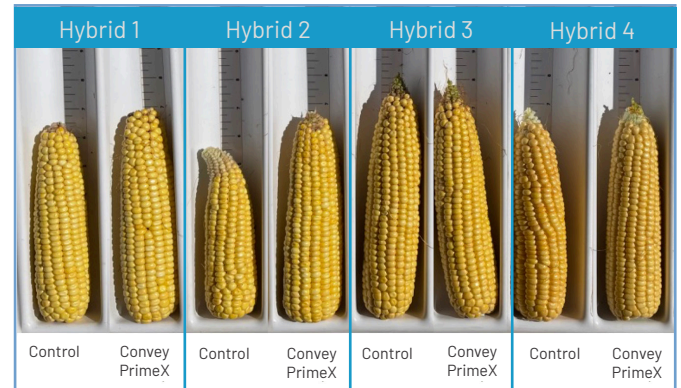


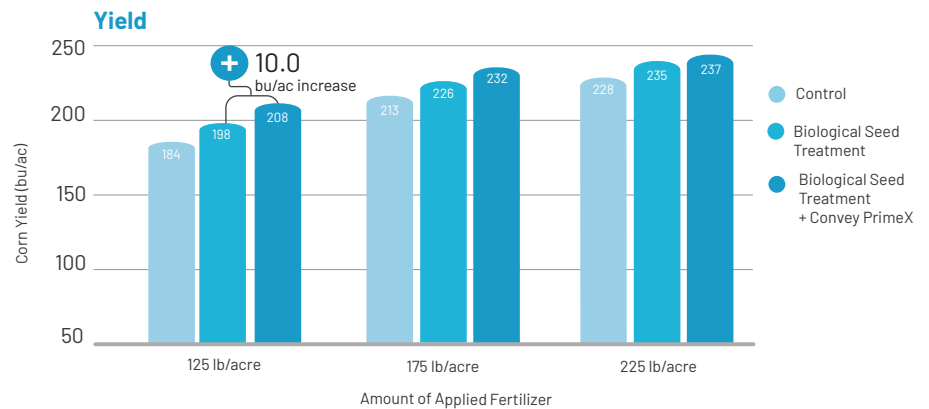
Figure 1: Ear Development



## Improved Plant Vigor and Corn Yield

Replicated corn trials showed the addition of Convey PrimeX to the biological seed treatment increased seed germination, emergence, vigor (Figure 2), number of kernels per ear and weight per ear. The end result was an overall grain yield up to 10 bu/ac. In addition, Convey PrimeX outperformed all other treatments at all rates of soil applied fertilizer.

Figure 2: Vigor



## Product Recommendations

- Convey PrimeX may be applied directly to seeds in planter box, seed box or seed tender.
- Applications should be made to ensure thorough seed coverage by applying in layers and gently stirring to ensure uniform coverage.
- Dry powder applicator meters may also be used to evenly apply product on seed.
- Shake well before use. Be sure lid is secure before shaking.
- To view the Convey PrimeX SDS and product label, as well as to read more information on product compatibility please visit [www.atpag.com](http://www.atpag.com)

Product	Analysis	Rate	Acres Treated/Pail	Timing
Convey PrimeX	3Zn-1.5Fe-1.5Mn-0.5Mo-0.25B + Convey + Fluency Agent	42.5 g/acre	107	Seed



At ATP, we believe a proactive, science-based approach to restore the balance between plant and soil health is the single most effective way to deliver the genetic potential of the crop. We challenge the status quo by utilizing agtech to monitor and drive productivity.

[info@atpag.com](mailto:info@atpag.com) | 1.877.538.5511 | [www.atpag.com](http://www.atpag.com)